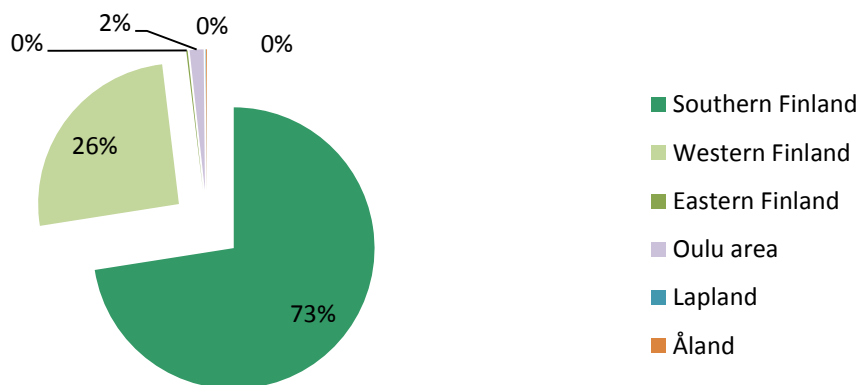


Covered Bonds issued under the Euro Medium Term Note and Covered Bond Programme

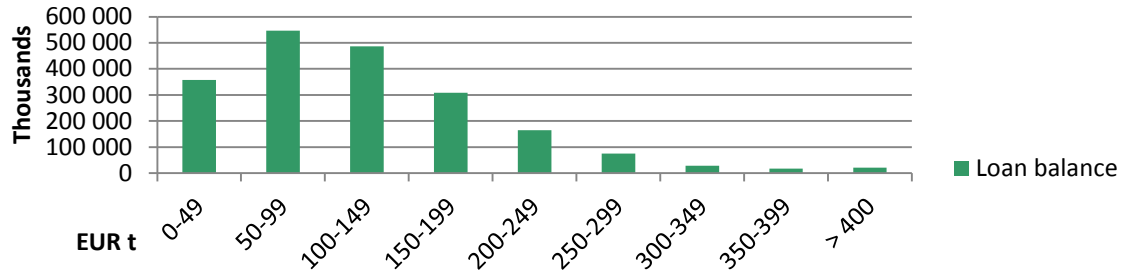
	ISIN	Issue Date	Maturity Date	Nominal Amount	Coupon
Series 1	XS0946639381	25.6.2013	25.6.2018	500 000 000	1.125
Series 2	XS1056447797	15.4.2014	15.4.2019	500 000 000	1.00
Series 3	XS1210338015	31.3.2015	31.3.2022	500 000 000	0.25
Series 4	RCB 4,02% 11/41	26.9.2016	15.11.2041	20 000 000	4.02
Series 5	RCB 4,03% 12/41	26.9.2016	2.12.2041	20 000 000	4.03
			Sum, EUR	1 540 000 000	

Asset Pool Balance	EUR 2,005m (no substitute assets)
No of loans / average loan balance	32,827 / EUR 61,100
Types of loans	First ranking residential mortgages and pledges of shares in housing companies
Geography	Finland only, well diversified with concentration on growth areas
Non-performing loans (> 90 days in arrears)	0.0
WA LTV	55.20 %
WA indexed LTV	55.03 %
Maximum LTV	Covered Bond refinancing max LTV limit: 70% Loans exceeding LTV 70 haircut at LTV 70%
Interest rate	floating 94 %, fixed 6 %
WA seasoning	41.0 months
Overcollateralisation (%)	30.23 %

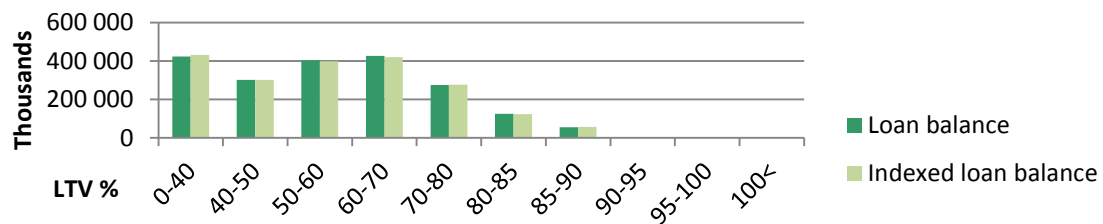
**Geographical distribution**



## Loans by size



## Loans by LTV



## Seasoning

