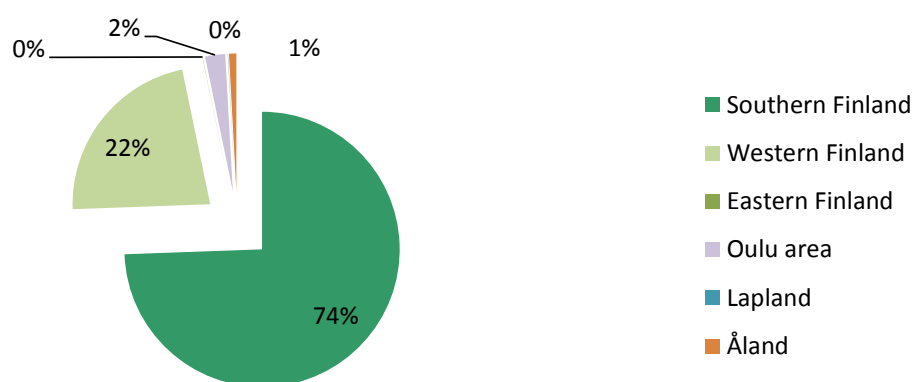


## Covered Bonds issued under the Euro Medium Term Note and Covered Bond Programme

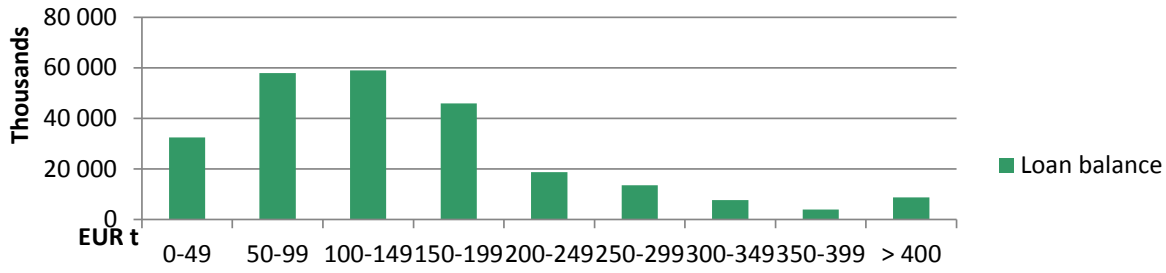
	ISIN	Issue Date	Maturity Date	Nominal Amount	Coupon
Series 1	XS0773219000	17.4.2012	17.4.2019	64 750 000	2.85
Series 2	RCB 3,97% 11/2011-3	25.11.2011	25.11.2031	10 000 000	3.97
Series 3	RCB 3,97% 11/2011-4	25.11.2011	25.11.2031	10 000 000	3.97
Series 4	RCB 3,97% 11/2011-5	25.11.2011	25.11.2031	1 000 000	3.97
Series 5	RCB 3,83 01/2012-1	27.1.2012	27.1.2032	10 000 000	3.83
Series 6	RCB 3,83 01/2012-2	27.1.2012	27.1.2032	10 000 000	3.83
Series 7	RCB 3,83 01/2012-3	27.1.2012	27.1.2032	1 000 000	3.83
Series 8	RCB 3,83 01/2012-4	27.1.2012	27.1.2032	1 000 000	3.83
			Sum, EUR	107 750 000	

Asset Pool Balance	EUR 0,248m (no substitute assets)
No of loans / average loan balance	2,937 / EUR 84,600
Types of loans	First ranking residential mortgages and pledges of shares in housing companies
Geography	Finland only, well diversified with concentration on growth areas
Non-performing loans (> 90 days in arrears)	0.0
WA LTV	47.13 %
WA indexed LTV	46.85 %
Maximum LTV	Covered Bond refinancing max LTV limit: 70%
	Loans exceeding LTV 70 haircut at LTV 70%
Interest rate	floating 98 %, fixed 2 %
WA seasoning	53.2 months
Overcollateralisation (%)	130.47 %

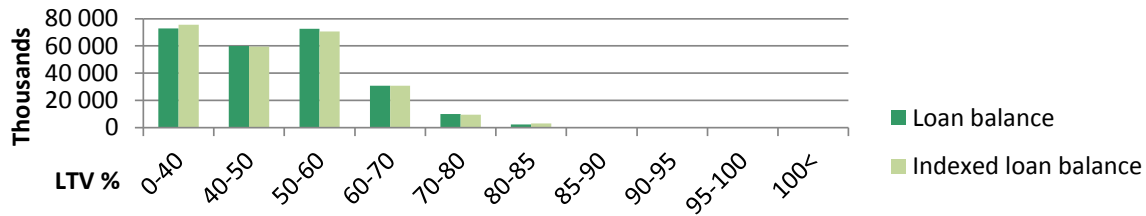
## Geographical distribution



## Loans by size



## Loans by LTV



## Seasoning

