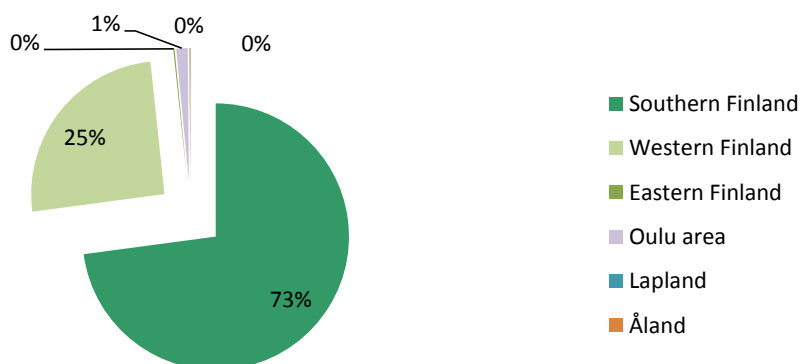


Covered Bonds issued under the Euro Medium Term Note and Covered Bond Programme

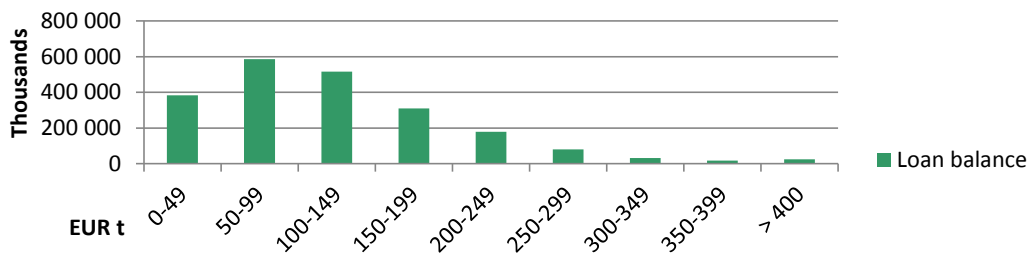
	ISIN	Issue Date	Maturity Date	Nominal Amount	Coupon
Series 1	XS0946639381	25.6.2013	25.6.2018	500 000 000	1,125
Series 2	XS1056447797	15.4.2014	15.4.2019	500 000 000	1,00
Series 3	XS1210338015	31.3.2015	31.3.2022	500 000 000	0,25
			Sum, EUR	1 500 000 000	

Asset Pool Balance	EUR 2,127m (no substitute assets)
No of loans / average loan balance	35,026 / EUR 60,700
Types of loans	First ranking residential mortgages and pledges of shares in housing companies
Geography	Finland only, well diversified with concentration on growth areas
Non-performing loans (> 90 days in arrears)	0,0
WA LTV	55,83 %
WA indexed LTV	55,62 %
Maximum LTV	Covered Bond refinancing max LTV limit: 70% Loans exceeding LTV 70 haircut at LTV 70%
Interest rate	floating 92 %, fixed 8 %
WA seasoning	32.8 months
Overcollateralisation (%)	41,79 %

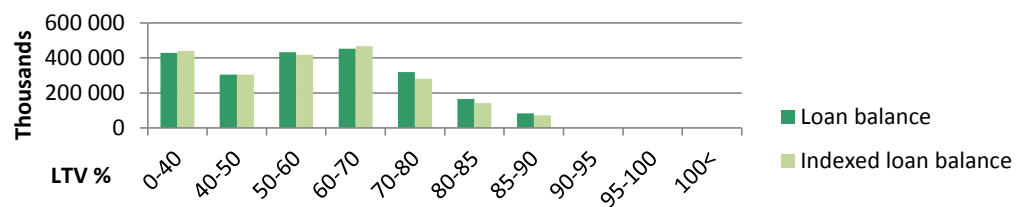
Geographical distribution



Loans by size



Loans by LTV



Seasoning

